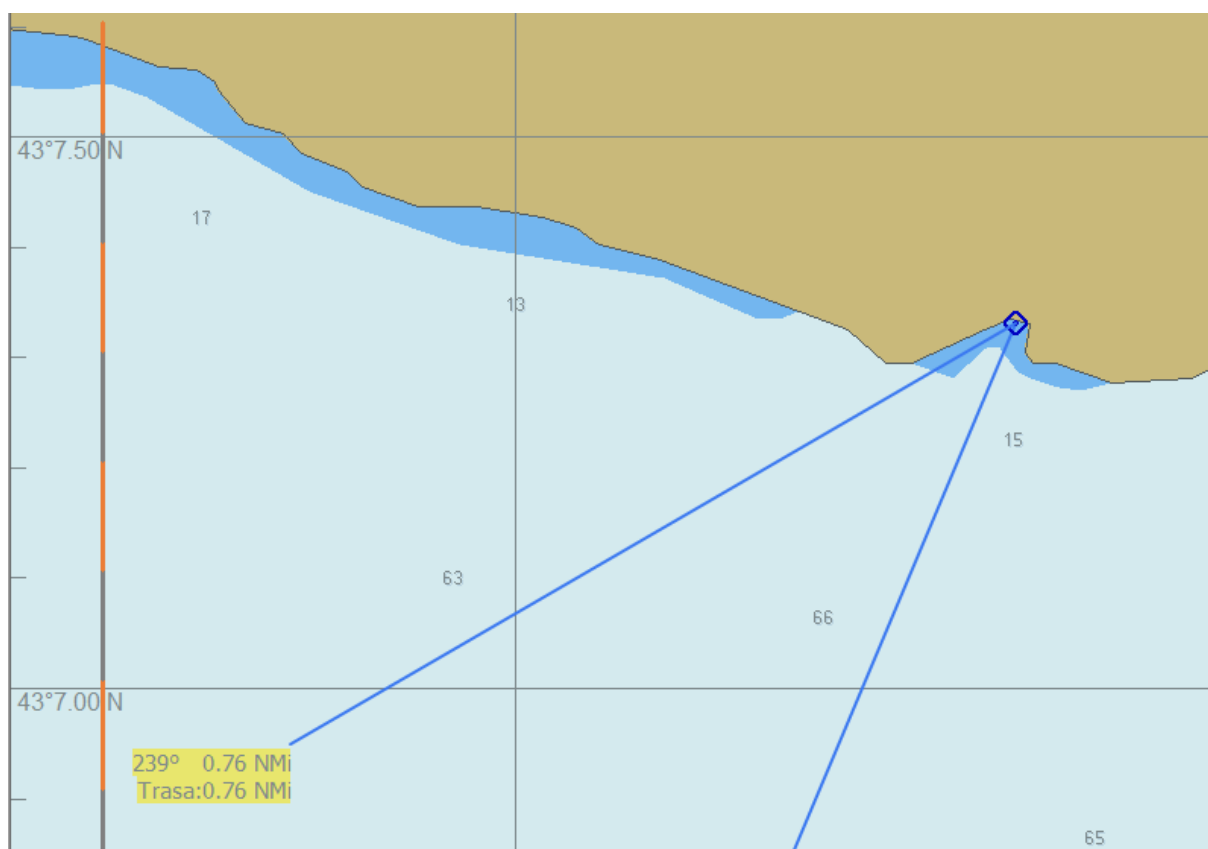


OBSERVACE 1 - HVAR – IVAN DOLAC – UVALA ZAGON

21.8.2015

CD LEGO-sextant dle <http://www.tecepe.com.br/nav/>

Omezený výhled na obzor – zátoka (SW výhled)





[Uvala Zagon](#) by [Denis Biondić](#)

Uvala Zagon

[By Denis Biondić](#)

[Misplaced?](#)
[Inappropriate](#)
[Comment it](#)

Panoramio

[Upload your photos](#)

1. LOP

Assumed position (GPS): N 43° 07.3', E 016° 39.7'

GMT time: 11:44:23

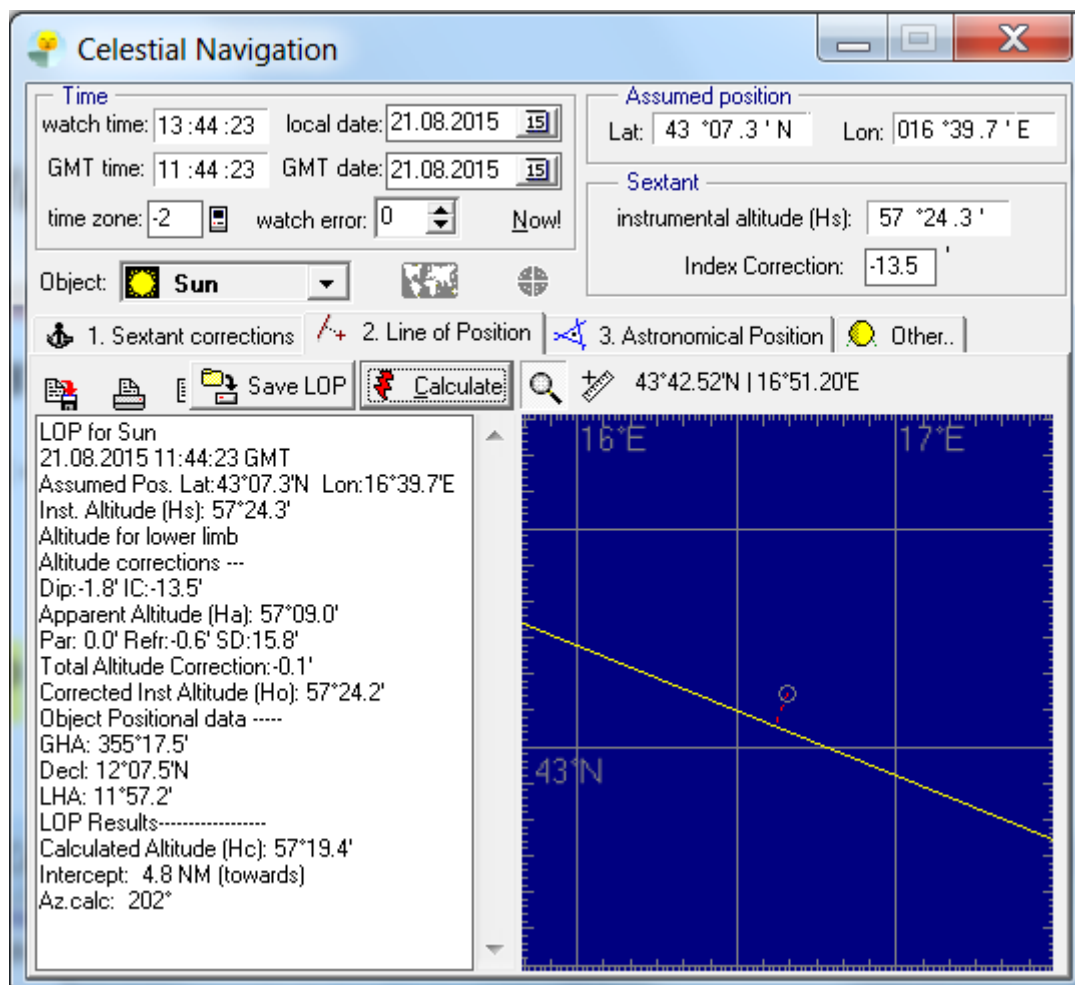
GMT date: 21.8.2015

Hs: 57° 24.3'

Index Corr.: -13.5'

Object: Sun (lower limb)

Dip: 1 meter



Intercept: +4.8 Nm (k objektu), azimut Az: 202°

2. LOP

Assumed position (GPS): N 43° 07.3', E 016° 39.7'

GMT time: 13:30:06

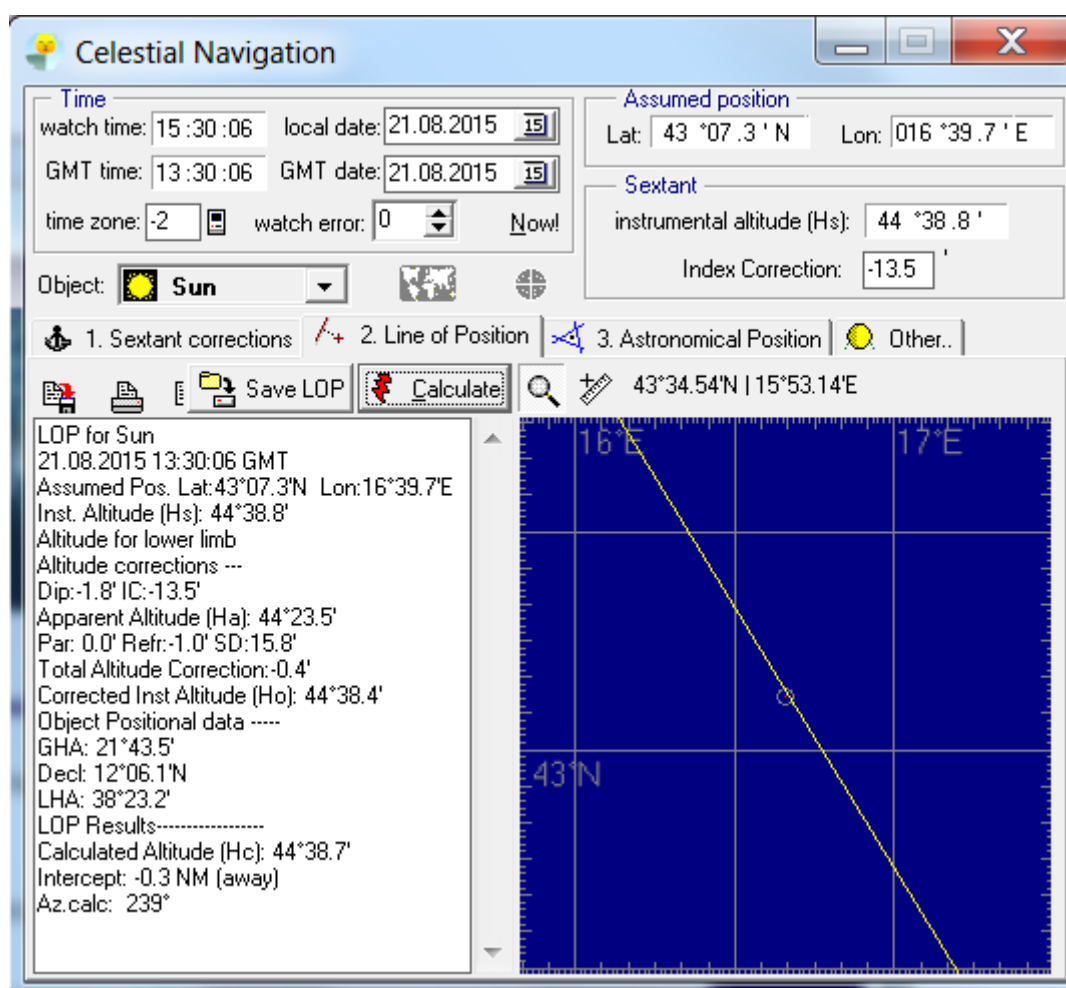
GMT date: 21.8.2015

Hs: 44° 38.8'

Index Corr.: -13.5'

Object: Sun (lower limb)

Dip: 1 meter



Intercept: -0.3 Nm (od objektu), azimut Az: 239°

OBSERVOVANÁ POLOHA:

Lat: 43° 00.2' N

Lon: 016° 46.2' E

The screenshot shows the 'Celestial Navigation' software interface. At the top, the title bar reads 'Celestial Navigation'. Below it, there are several input fields for time and position. The 'Time' section includes watch time (15:30:06), local date (21.08.2015), GMT time (13:30:06), GMT date (21.08.2015), time zone (-2), and watch error (0). The 'Assumed position' section shows Lat: 43° 07.3' N and Lon: 016° 39.7' E. The 'Sextant' section shows instrumental altitude (44° 38.8') and Index Correction (-13.5').

The 'Object' is set to 'Sun'. Below this, there are three tabs: '1. Sextant corrections', '2. Line of Position', and '3. Astronomical Position'. A table below these tabs lists the observations:

#	Object	Date/time	Hi	Delta	Az
✓ 1	Sun	21.08.2015 11:44:23	57°24.3'	4.8	202°
✓ 2	Sun	21.08.2015 13:30:06	44°38.8'	-0.3	239°

At the bottom, there is a navigation plot showing a grid of latitude and longitude. The plot displays two lines of position (LOPs) intersecting at a point. The coordinates of the intersection are 43°31.67'N | 16°14.93'E. To the right of the plot, there is a 'Calculate' button and a summary of the results:

Auto LOP Transport:
 Don't transport
 To Latest LOP Time
 To LOPs Mean Time
 To Selected Time

Calculate: Lat: 43°00.2'N
Lon: 16°46.2'E

Distances from AP to crossings:
LOPs 1 and 2: 0.0NM
Average Delta: 0.0NM
Standard Deviation: 0.0NM

AP for LOPs 1,2
1 crossings calculated
Lat: 43°00.2'N
Lon: 16°46.2'E

SKUTEČNÁ POLOHA DLE GPS:

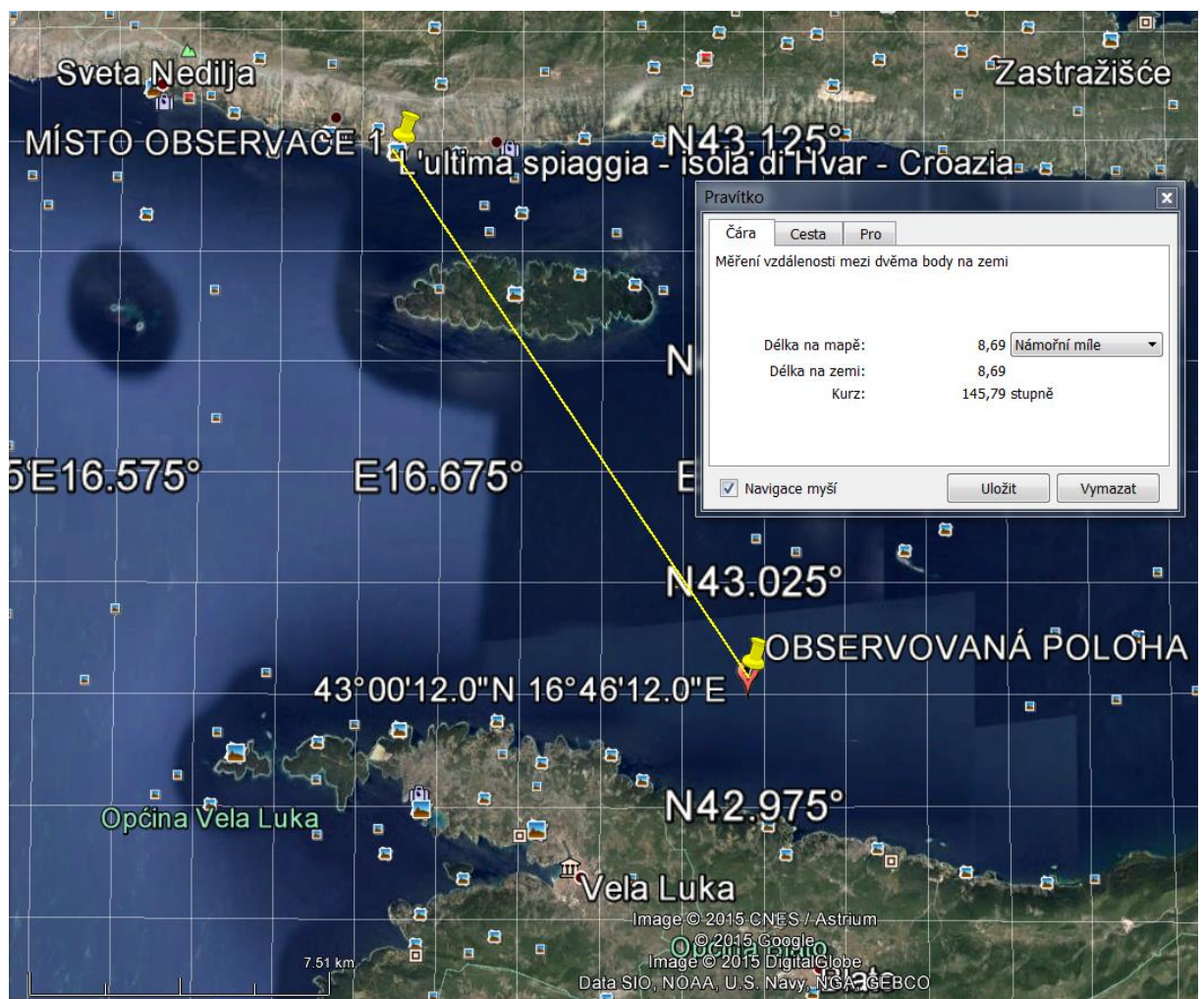
Lat: 43° 07.345' N

Lon: 016° 39.673 E

CHYBA URČENÍ POLOHY (Google Earth): CCA 8,7 NM

Skutečná poloha místa observace:
43° 07.345' N, 016° 39.673' E

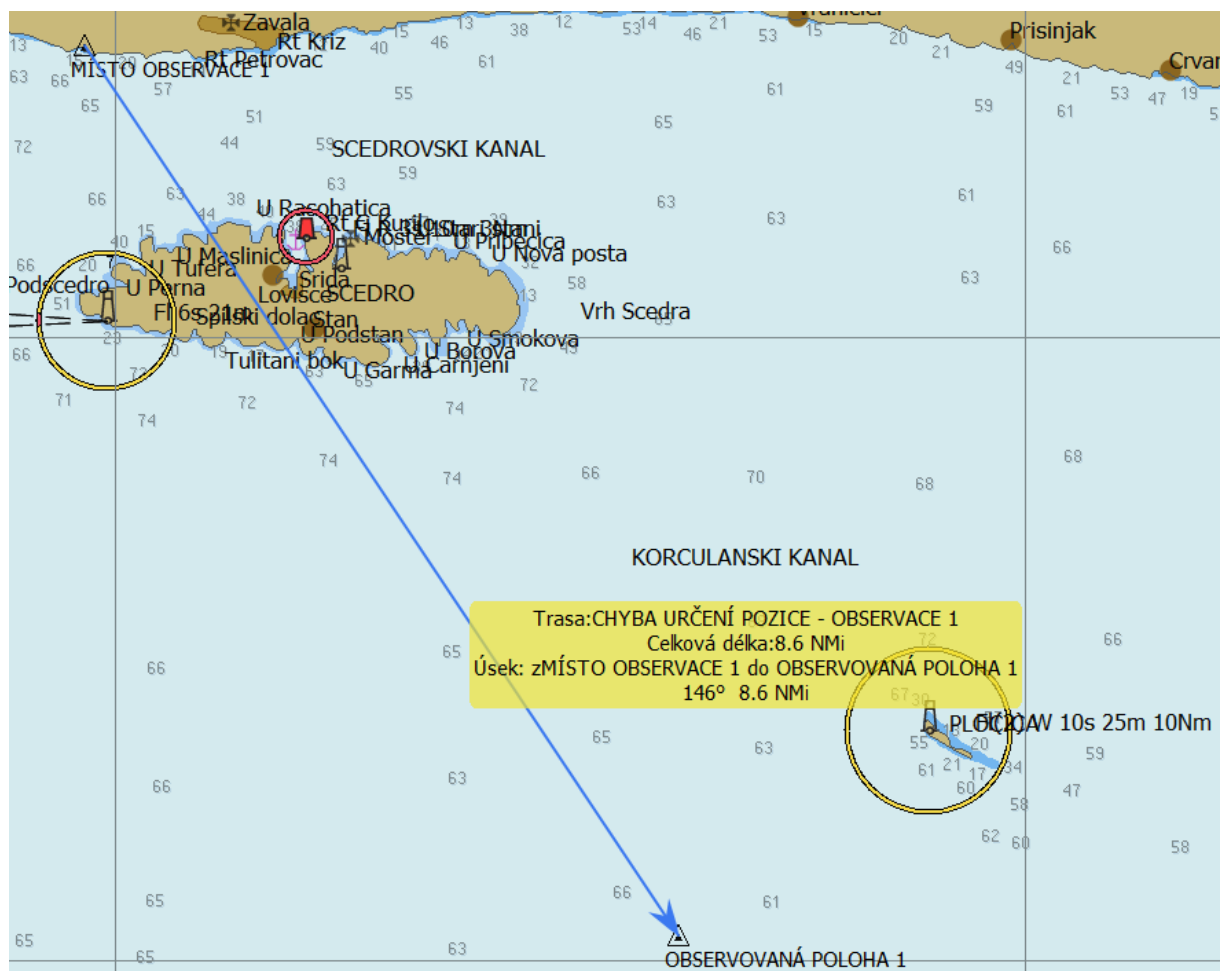
Observovaná poloha:
43° 00.2' N, 016° 46.2' E

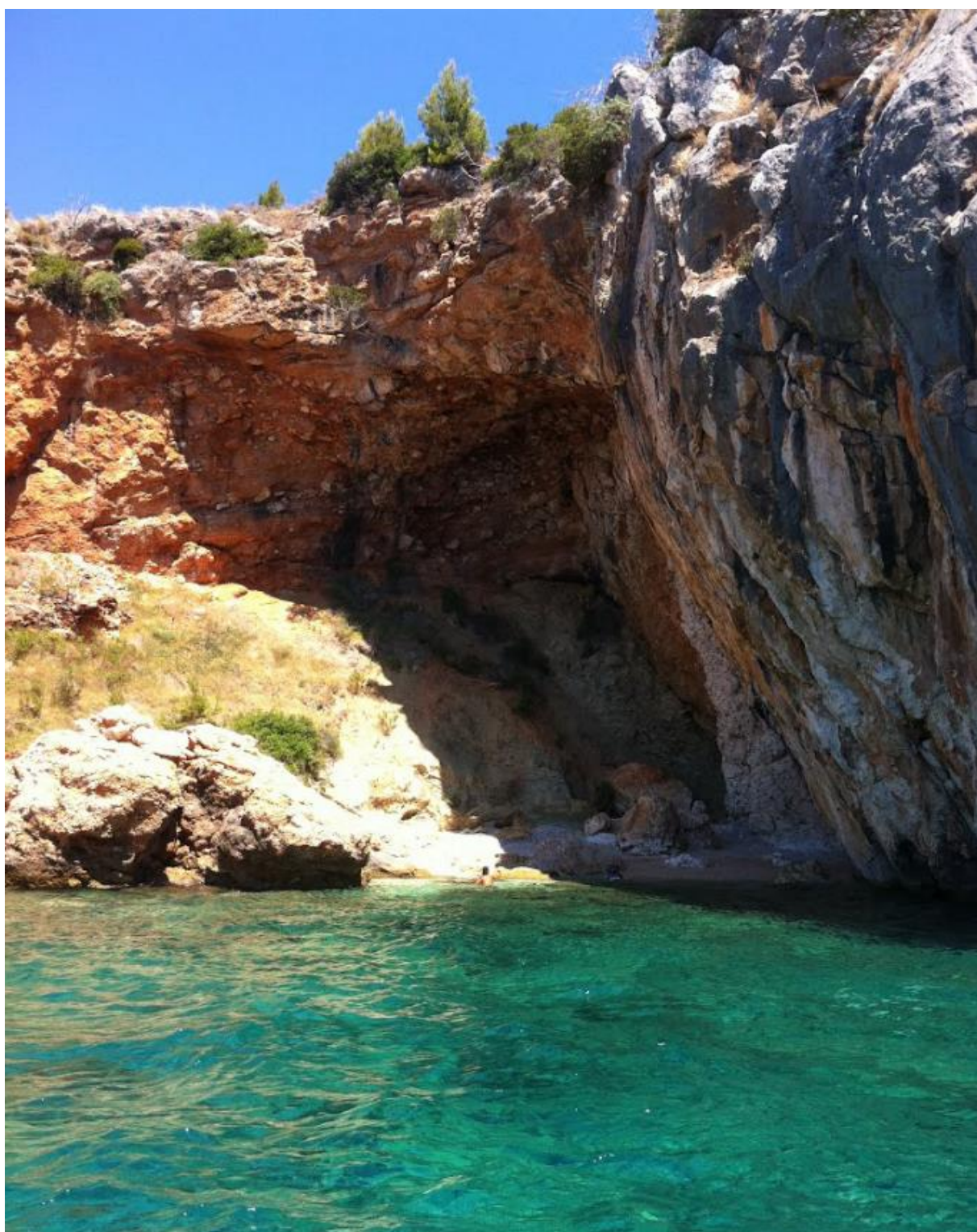


CHYBA URČENÍ POLOHY (OpenCPN): CCA 8,6 NM

Skutečná poloha místa observace:
43° 07.345'N, 016° 39.673'E

Observovaná poloha:
43° 00.2'N, 016° 46.2'E





Jeskyně nedaleko místa observace